

NexGen: The Next Generation of Risk Science

Daniel Krewski, PhD, MHA

Professor and Director
McLaughlin Centre for
Population Health Risk Assessment
&
Risk Sciences International

November 2, 2012

Université d'Ottawa | University of Ottawa



uOttawa

L'Université canadienne
Canada's university



www.uOttawa.ca



Next generation risk assessment

NexGen

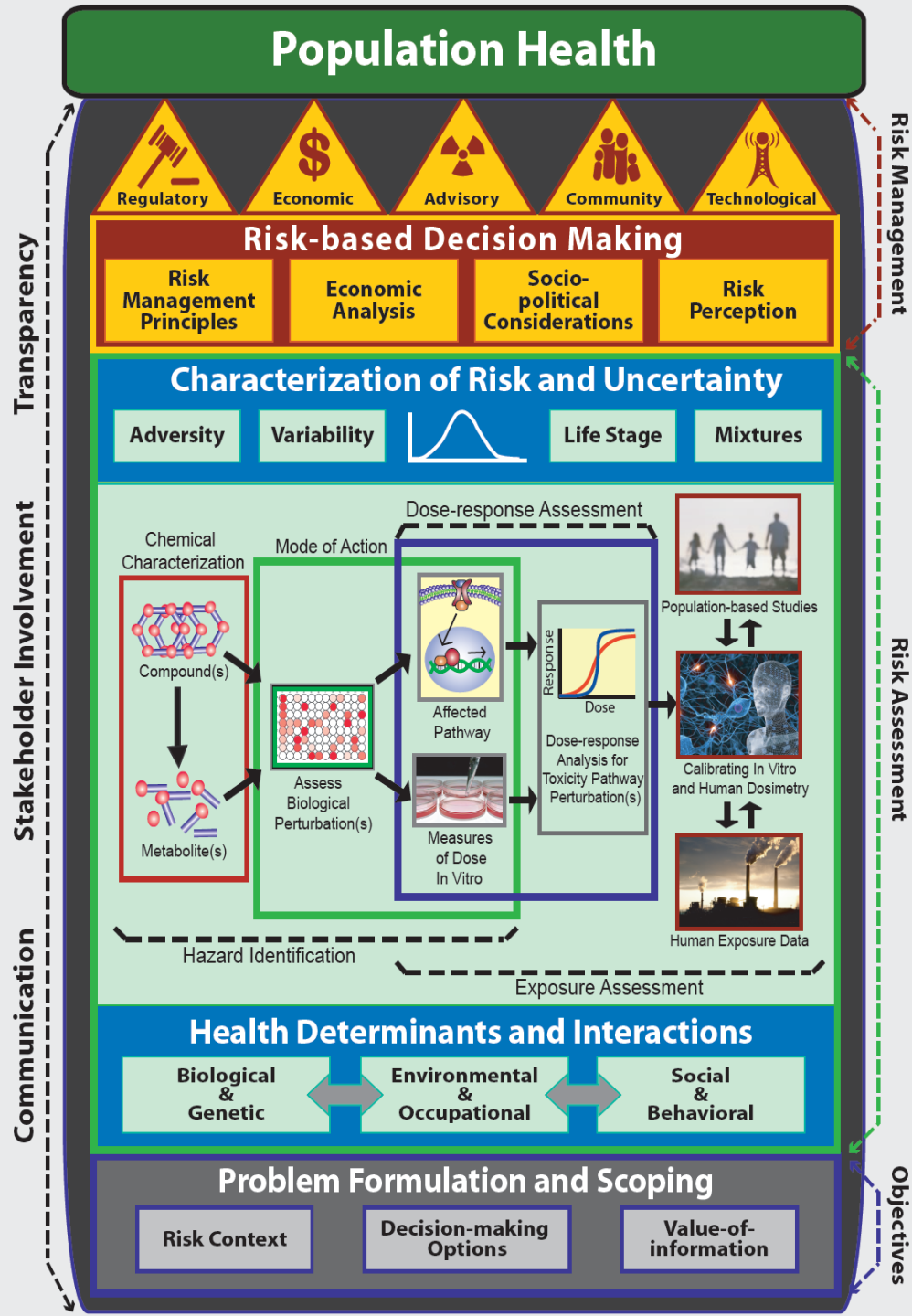
Advancing the Next Generation of Risk Assessment

Public Dialogue Conference

FEBRUARY 15 & 16, 2011 | WASHINGTON, DC

The banner features a diverse family of five (a woman holding a baby, a man, a woman, and a young girl) standing together. The background is a light blue gradient with faint molecular and DNA structures.

Population Health

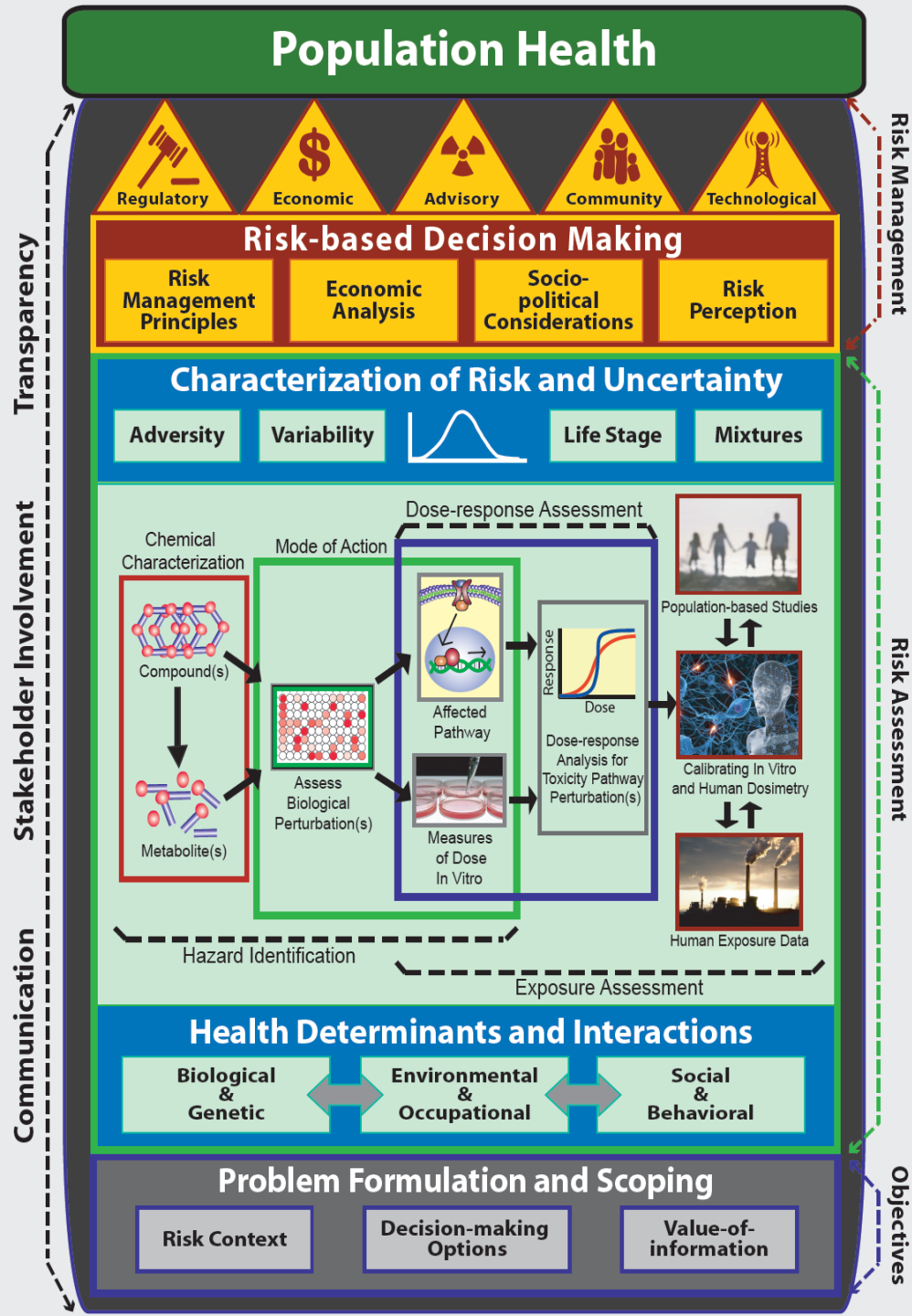


Three Cornerstones

- **New paradigm for toxicity testing (TT21C)**, based on perturbation of toxicity pathways
- **Advanced risk assessment methodologies**, including those addressed in *Science and Decisions*
- **Population health approach**: multiple health determinants and multiple interventions



Population Health



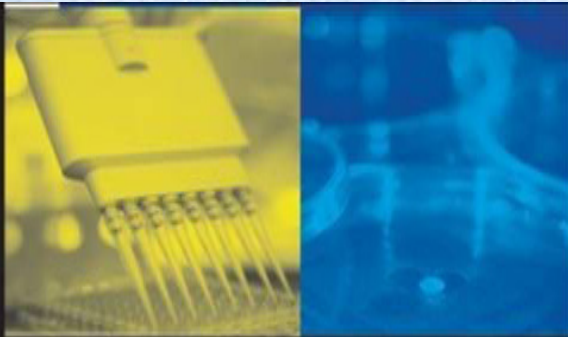
Three Cornerstones

- **New paradigm for toxicity testing (TT21C)**, based on perturbation of toxicity pathways
- Advanced risk assessment methodologies, including those addressed in *Science and Decisions*
- Population health approach: multiple health determinants and multiple interventions

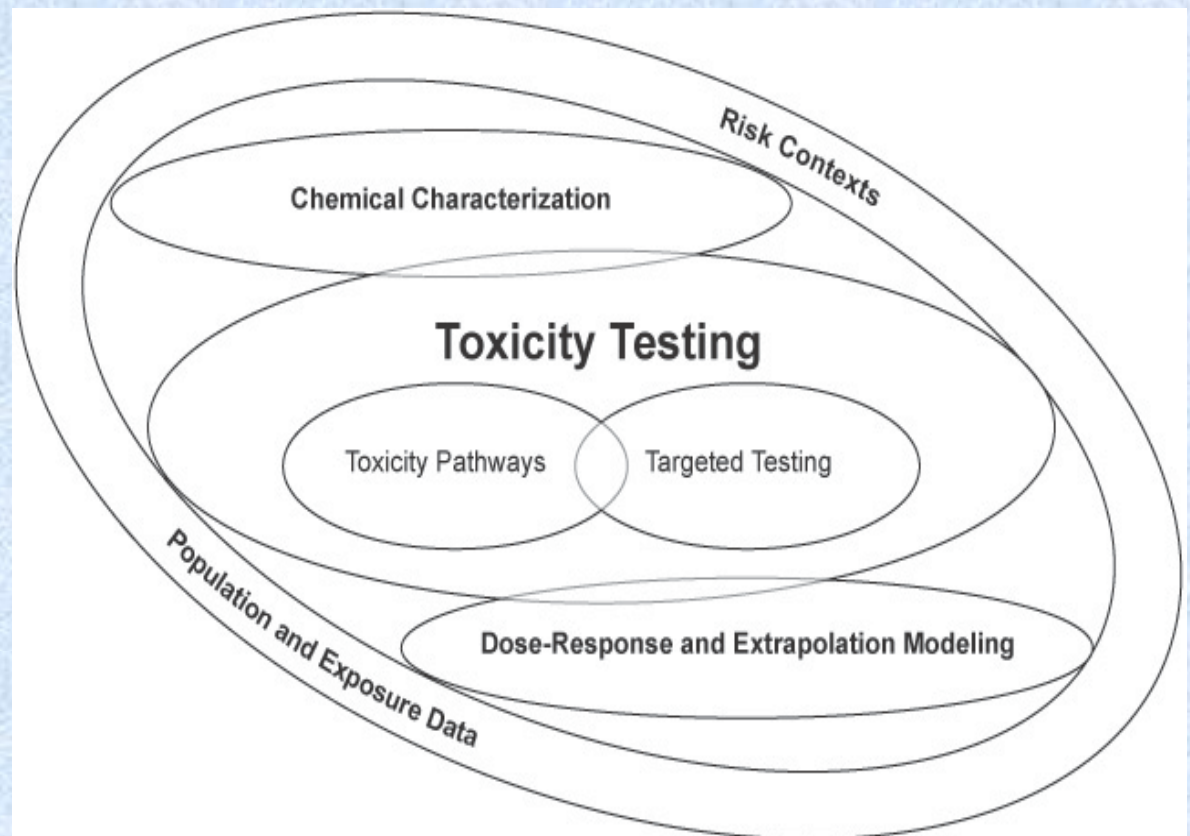




Toxicity Testing in the 21st Century



TOXICITY TESTING IN THE 21ST CENTURY: A VISION AND STRATEGY



www.nas.edu

THE NATIONAL ACADEMIES
Advisers to the Nation on Science, Engineering, and Medicine

Building the Scientific Toolbox

(Andersen & Krewski, 2009, Tox. Sci)

Tool	Application
High throughput screens	Efficiently identify critical toxicity pathway perturbations across a range of doses and molecular and cellular targets
Stem cell biology	Develop in vitro toxicity pathway assays using human cells produced from directed stem cell differentiation
Functional genomics	Identify the structure of cellular circuits involved in toxicity pathway responses to assist computational dose response modeling
Bioinformatics	Interpret complex multivariable data from HTS and genomic assays in relation to target identification and effects of sustained perturbations on organs and tissues
Systems biology	Organize information from multiple cellular response pathways to understand integrated cellular and tissue responses
Computational systems biology	Describe dose-response relationships based on perturbations of cell circuitry underlying toxicity pathway responses giving rise to thresholds, dose-dependent transitions, and other dose-related biological behaviors
Physiologically-based pharmacokinetic models	Identify human exposure situations likely to provide tissue concentrations equivalent to in vitro activation of toxicity pathways
Structure-activity relationships	Predict toxicological responses and metabolic pathways based on the chemical properties of environmental agents and comparison to other active structures
Biomarkers	Establish biomarkers of biological change representing critical toxicity pathway perturbations



Human Toxicology Project Consortium

Accelerating Implementation of the NRC Vision for Toxicity Testing in the 21st Century

A Human Toxicology Project Consortium Symposium

November 9 - 10, 2010

Kellogg Conference Center, Gallaudet University
Washington, DC

UNITED STATES ENVIRONMENTAL PROTECTION AGENCY

NIEHS
National Institute of Environmental Health Sciences

National Human Genome Research Institute

NOGC
NIH CHEMICAL GENOMICS CENTER

FDA

EPA
United States Environmental Protection Agency

EPA/100/K-09/001 | March 2009
www.epa.gov/osa

The U.S. Environmental Protection Agency's Strategic Plan for Evaluating the Toxicity of Chemicals

Chemicals

Receptors / Enzymes / etc.
Direct Molecular Interaction

Pathway Regulation / Genomics

Cellular Processes

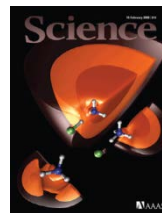
Tissue / Organ / Organism Tox Endpoint

Office of the Science Advisor
Science Policy Council

FDA

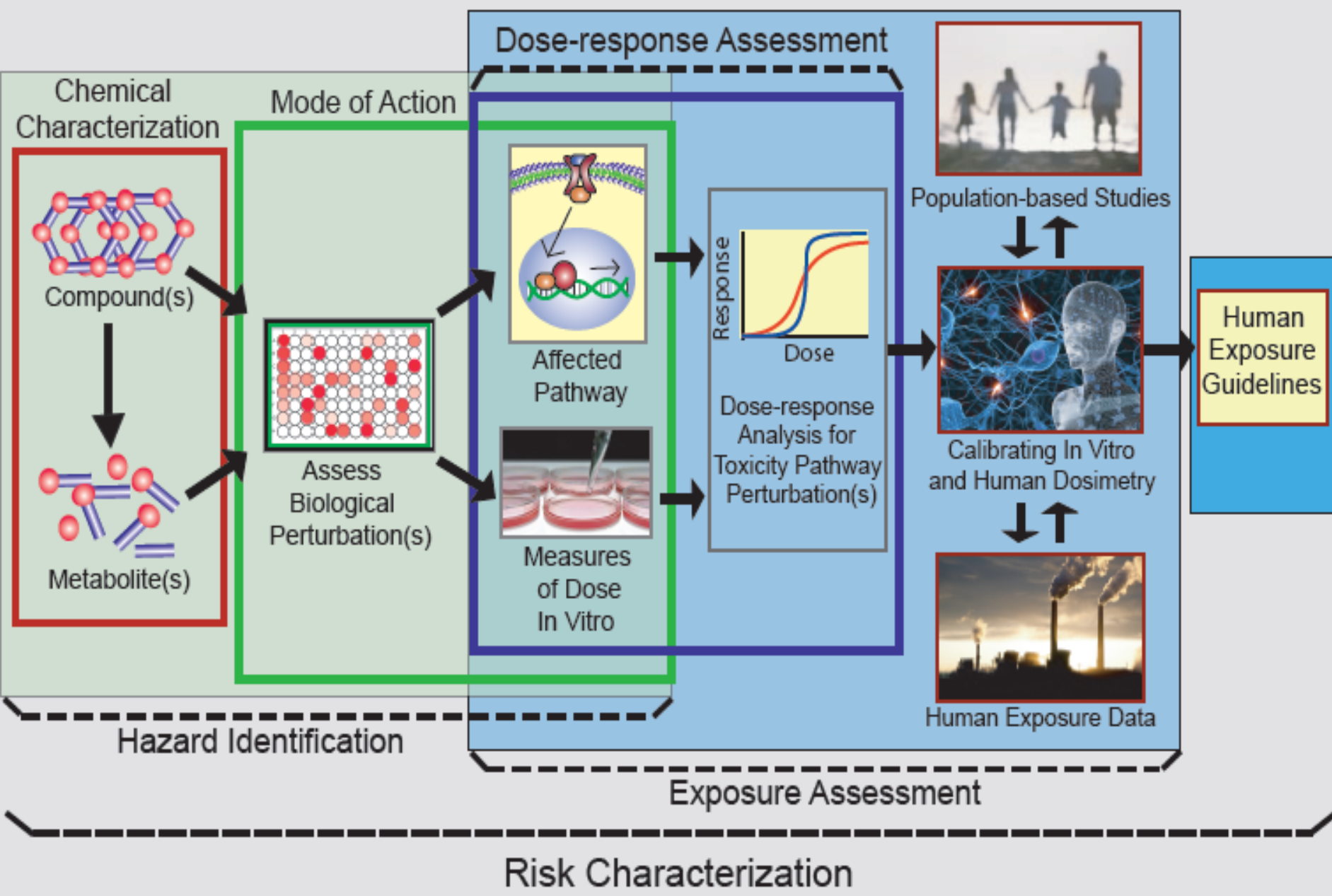
Science

Hamburg, M. (2011),
Science (Editorial).
Vol. 335. p. 987



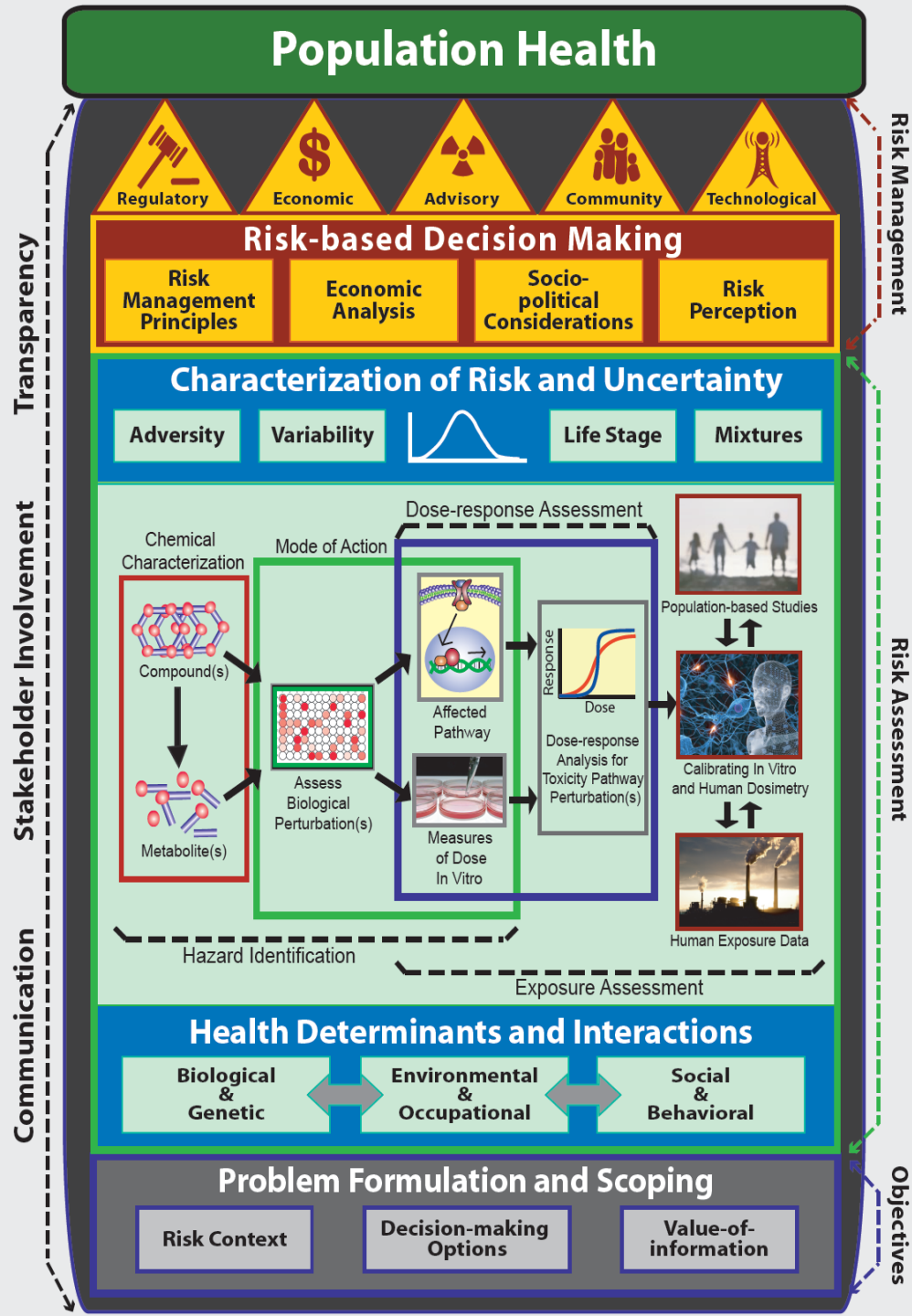
Collins, F.S., Gray, G.M. & Bucher, J.R. (2008),
Science (Policy Forum). Vol. 319. pp. 906 - 907





Krewski et al. (2011), ARPH

Population Health



Three Cornerstones

- New paradigm for toxicity testing (TT21C), based on perturbation of toxicity pathways
- **Advanced risk assessment methodologies**, including those addressed in *Science and Decisions*
- Population health approach: multiple health determinants and multiple interventions



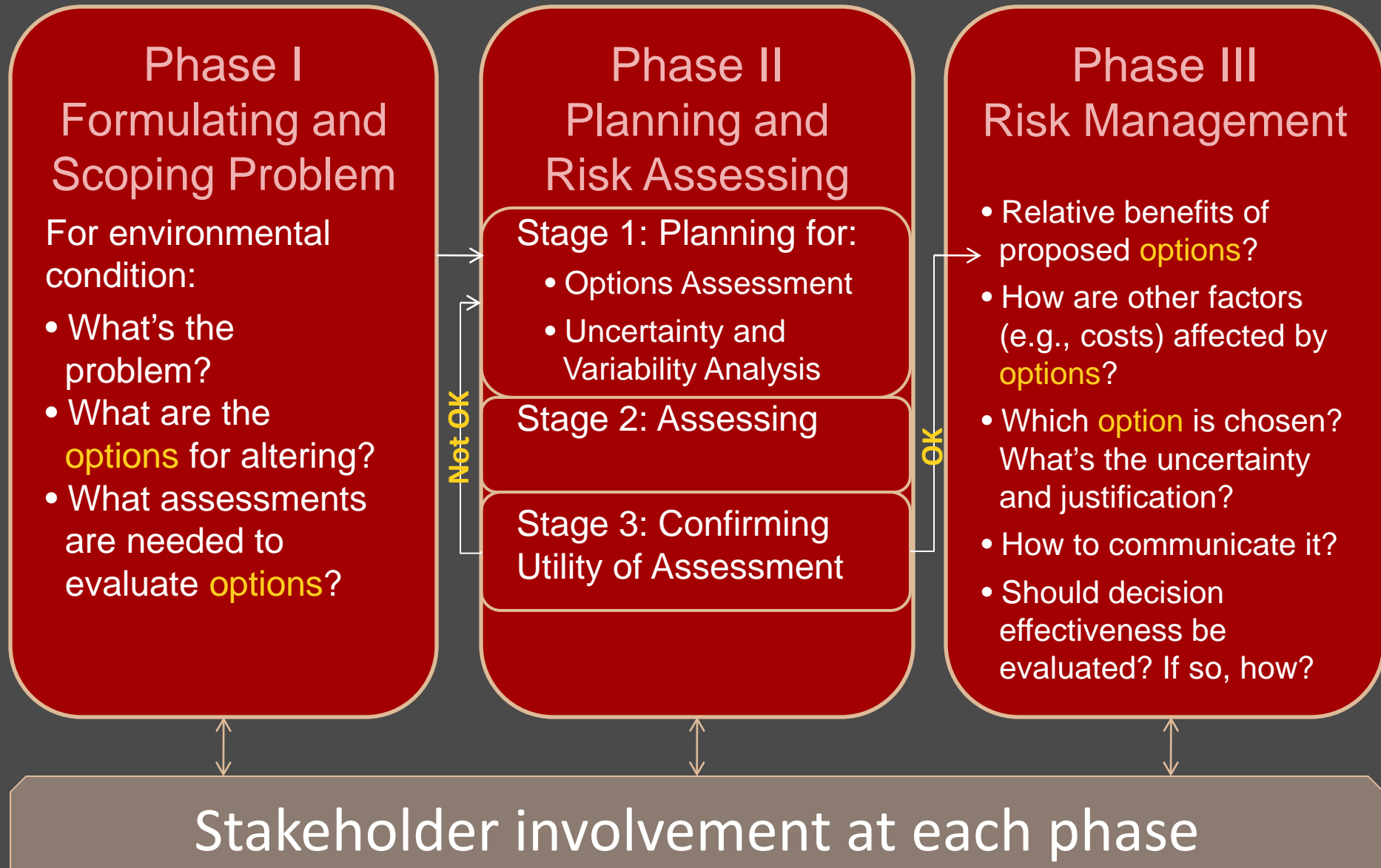


KEY MESSAGES

- Enhanced framework
- Formative focus
- Four steps still core
- Matching analysis to decisions
- Clearer estimates of population risk
- Advancing cumulative assessments
- People and capacity building



“Risk-Based Decision-Making” Framework



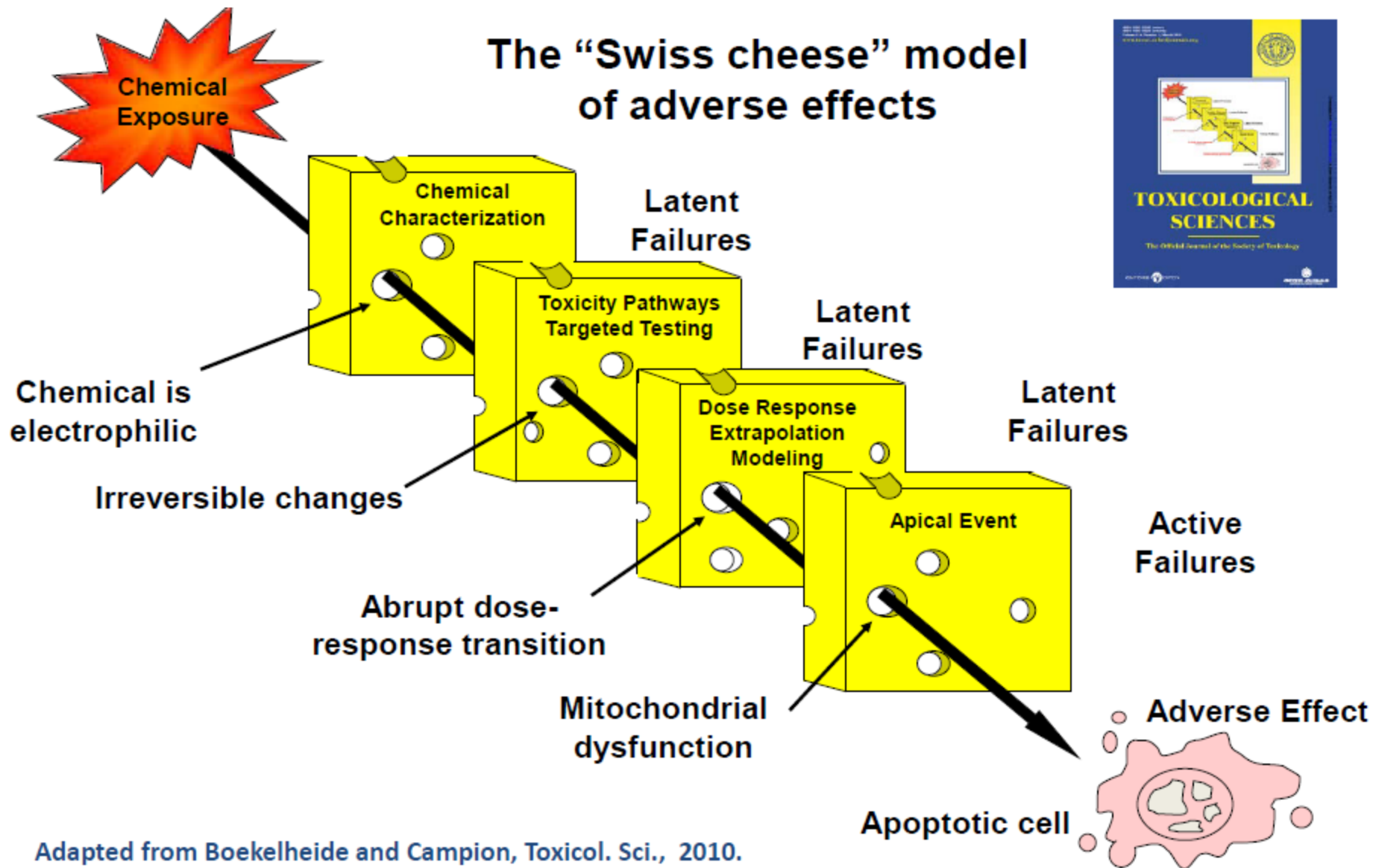
Methodological Issues

- Adversity
- Variability
- Susceptible populations
- Dose and species extrapolation
- Mixtures and multiple stressors
- Uncertainty analysis

Methodological Issues: (1) Adversity

Issue	Current Approach	NexGen Approach
Adverse outcomes	Apical outcomes in mammalian systems, or precursors to these outcomes, serve as the basis for risk assessment.	In vitro assays identify critical toxicity pathway perturbations, which serve as the basis for risk assessment, even in the absence of a direct link with an apical outcome.

The "Swiss cheese" model of adverse effects

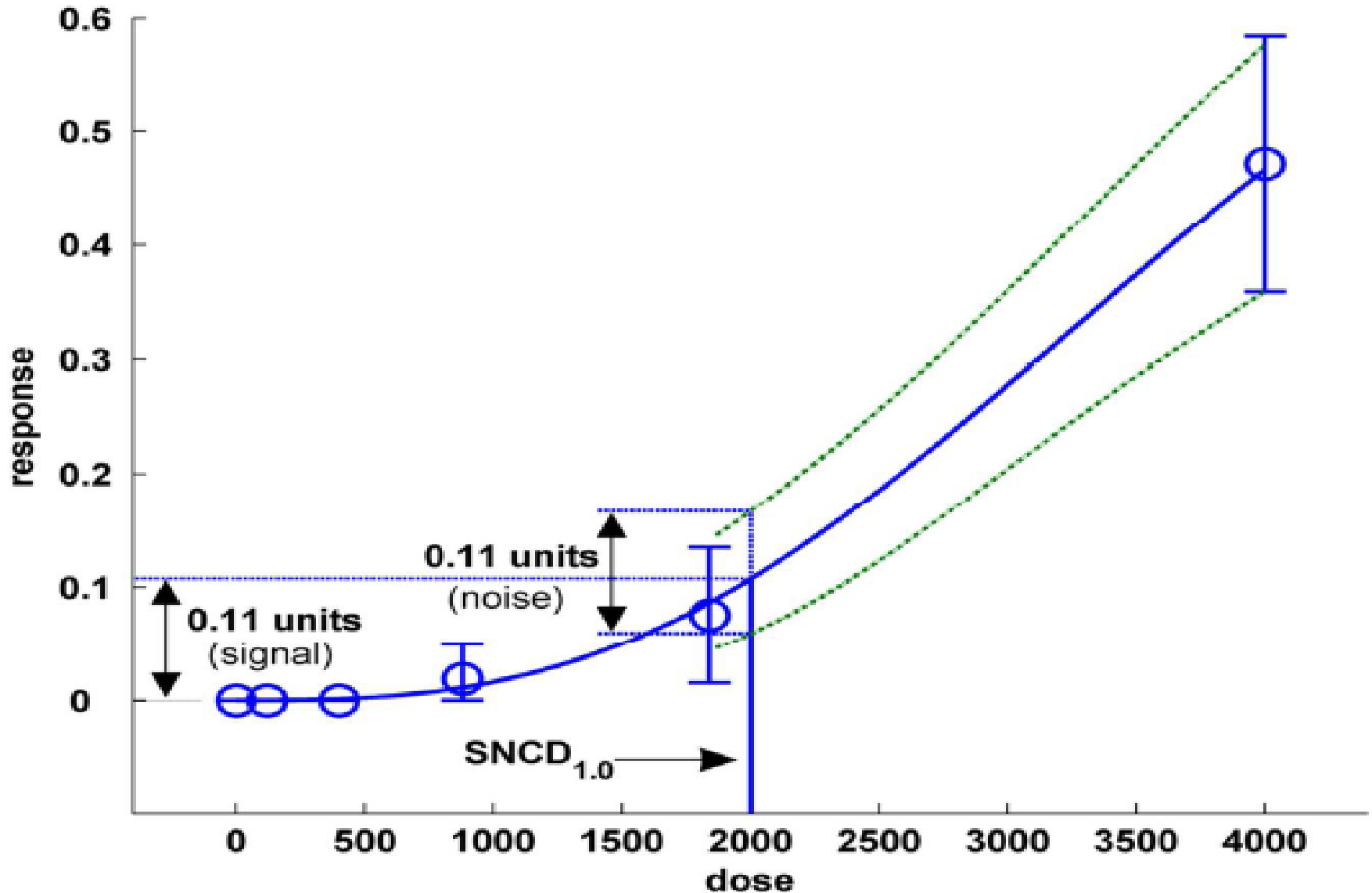


Methodological Issues: (2) Dose-response

Issue	Current Approach	NexGen Approach
Dose-response assessment	Empirical or biologically-based models describe apical endpoints, and determine an appropriate point of departure (such as the benchmark dose) for establishing a reference dose.	Computational systems biology pathway models describe dose-response relationships for pathway perturbations, reflecting dose-dependent transitions throughout the dose range of interest.

Signal-to-Noise Crossover Dose (SNCD)

Sand, Portier & Krewski (2011), EHP



Methodological Issues: (3) Variability

Issue	Current Approach	NexGen Approach
Inter-individual variability	<p>Adjustment factors used in establishing reference doses account for inter-individual variability in PK and PD.</p> <p>Variability in exposure is also taken into account.</p>	<p>Variability in biological response is characterized through the use of a diverse range of human cell lines.</p> <p>Dosimetry models link variation in human exposure with corresponding in vitro doses.</p>

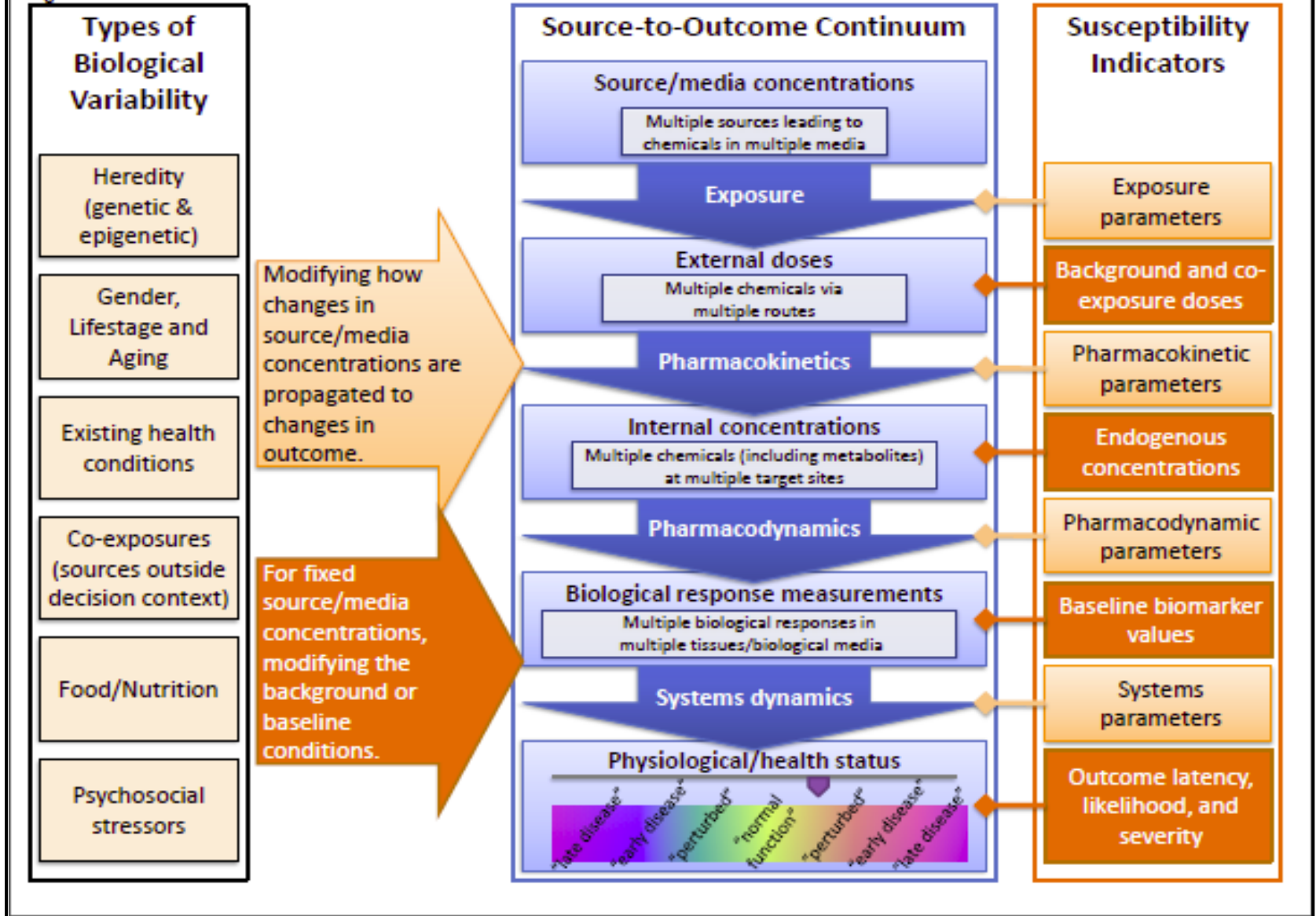
Table 1. Examples of data sources for modeling PK and PD variability

Variability in human phase I and phase II metabolism and renal excretion, including in different age groups - neonates, children and the elderly	(Dorne 2010; Ginsberg et al. 2004; Ginsberg et al. 2002; Hattis et al. 2003)
Compilations of genetic polymorphisms of specific metabolic enzyme activities:	
• paraoxonase	(Ginsberg et al. 2009a)
• N-Acetyltransferase 1 and 2	(Bois et al. 1995; Walker et al. 2009)
• glutathione transferases	(Ginsberg et al. 2009b)
• CYP2D6	(Neafsey et al. 2009b)
• CYP2E1	(Neafsey et al. 2009a)
• ALDH2	(Ginsberg et al. 2009c)
Human biomonitoring observations of inter-individual differences in biomarkers of exposure (e.g., chemical-protein adducts) or in levels of parent/metabolite	(Bois et al. 1996)
Variability in physiological parameters for older adults: bodymass, surface area, body mass index, health status	(Thompson et al. 2009)
Indicators of PD variability such as in:	
• human DNA repair enzyme XRCC1	(Ginsberg et al. 2011)
• human host defense enzymes	(Ginsberg et al. 2010)
• lung function response to particulate matter	(Hattis et al. 2001)
• susceptibility to infectious organisms	(Hattis 1997)

From Zeise et al. (2012): “Assessing Human Variability in the Next Generation Health Assessments of Environmental Chemicals”

Methodological Issues: (4) Susceptibility

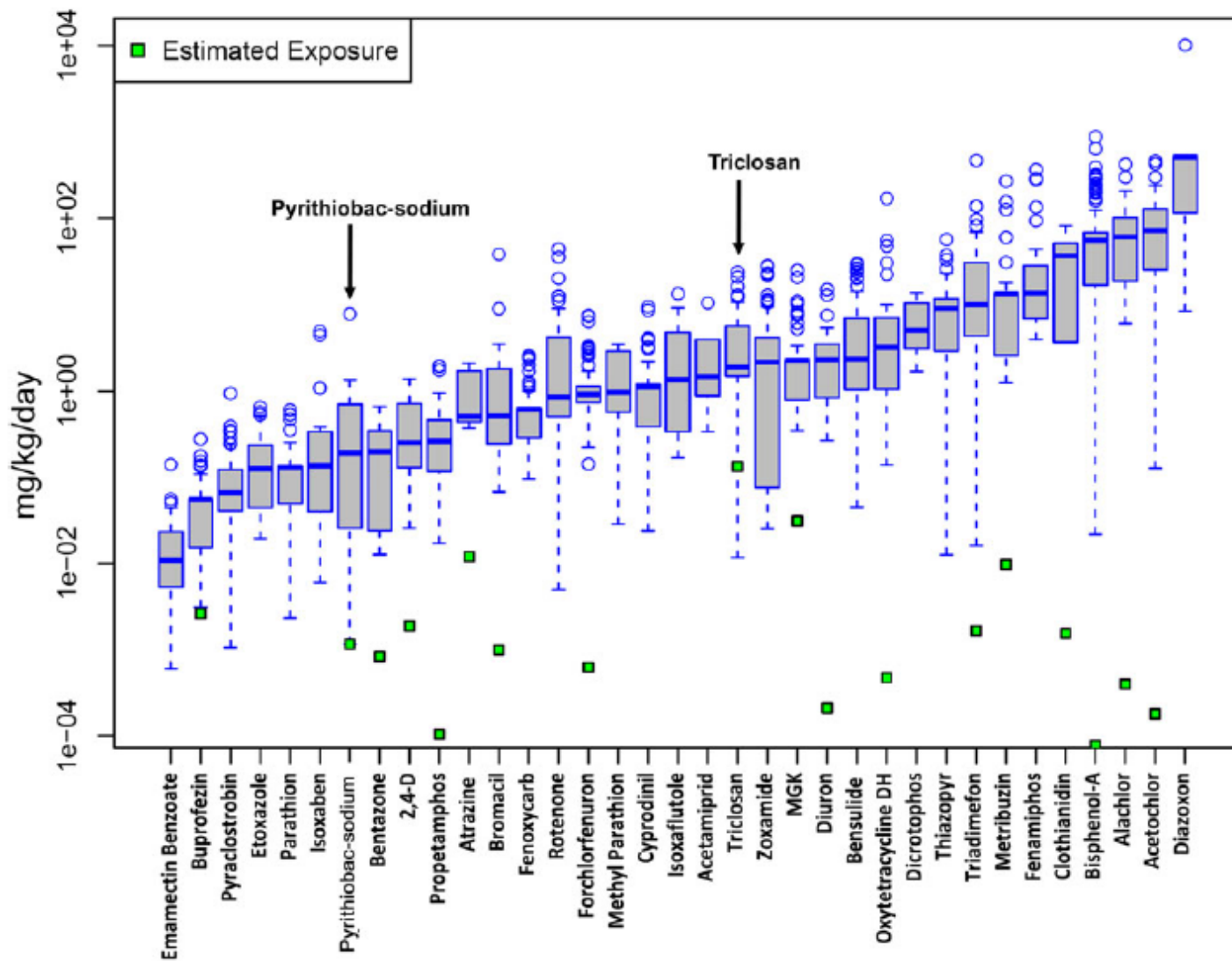
Issue	Current Approach	NexGen Approach
Susceptible populations	Life-stage, genetics, and socioeconomic and lifestyle factors determine susceptible population groups.	Molecular and genetic epidemiology defines susceptible populations in terms of critical pathway perturbations.



How susceptibility arises from variability
(from Zeise et al., 2012)

Methodological Issues: (5) Extrapolation

Issue	Current Approach	NexGen Approach
Dose and species extrapolation	Dose and species extrapolation translate animal test results to humans.	Cellular assays provide direct measures of toxicity pathway perturbations in humans. IVIVE techniques and pathway modeling calibrate in vitro and in vivo exposures. Sensitive in vitro tests are used to evaluate risk directly at environmental exposure levels.



Rotroff DM, Wetmore BA, Dix DJ, Ferguson SS, Clewell HJ, Houck KA, Lecluyse EL, Andersen ME, Judson RS, Smith CM, Sochaski MA, Kavlock RJ, Boellmann F, Martin MT, Reif DM, Wambaugh JF, Thomas RS (2010) Incorporating human dosimetry and exposure into high-throughput in vitro toxicity screening. *Toxicol Sci* 117: 348-358

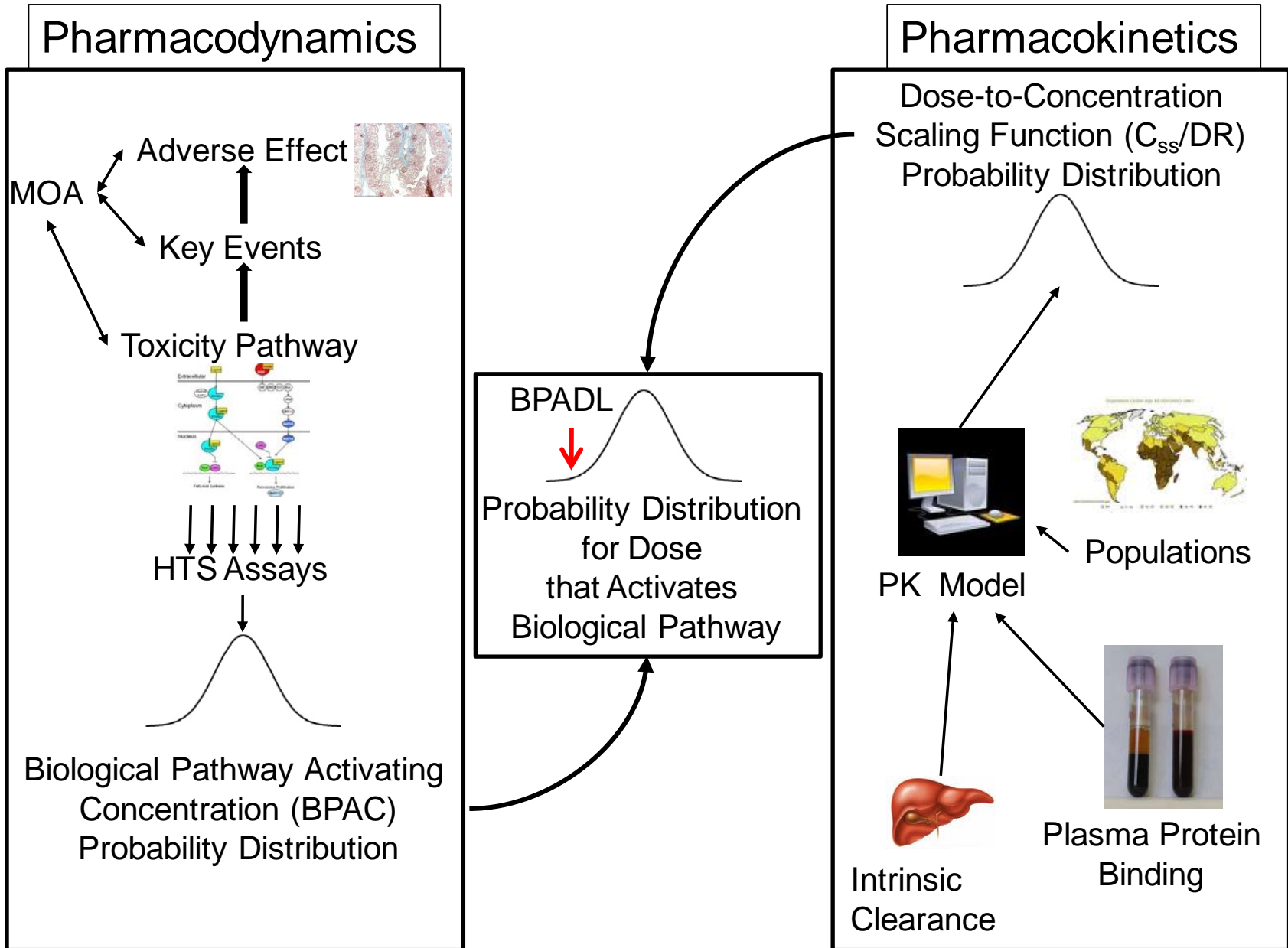
Methodological Issues: (6) Mixtures

Issue	Current Approach	NexGen Approach
Mixtures and multiple stressors	Common experimental protocols include testing of mixtures and factorial experiments with joint exposures. However, there are only a limited number of such studies because of cost and complexity of experimental design.	Cost-effective high throughput technologies permit expanded testing of mixtures and multiple stressors.

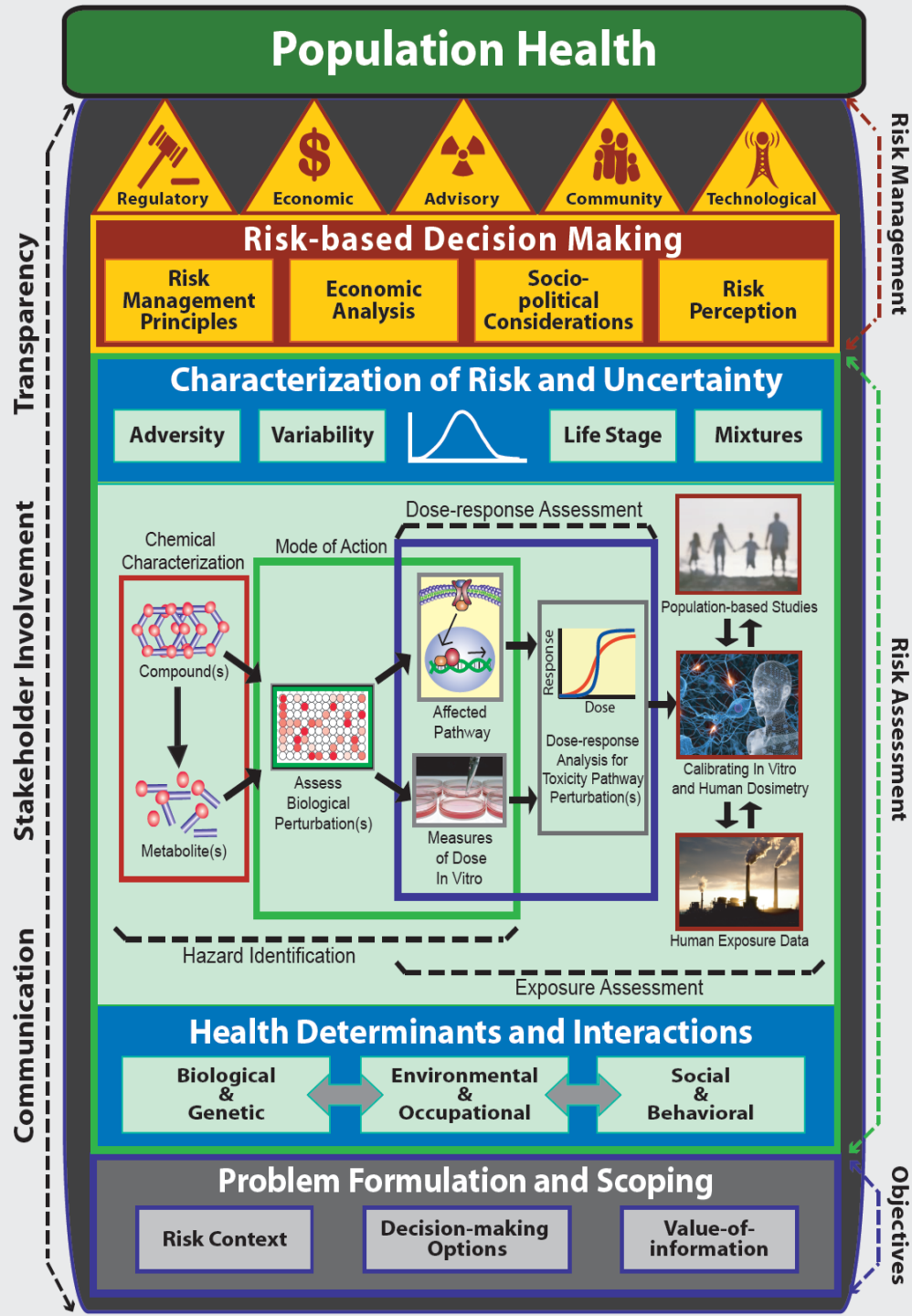
Methodological Issues: (7) Uncertainty

Issue	Current Approach	NexGen Approach
Uncertainty analysis	Uncertainty considerations include species differences in susceptibility, low-dose and route-to-route extrapolation, and exposure ascertainment.	Probabilistic risk assessments characterize overall uncertainty, and identify the most important sources of uncertainty that guide value-of-information decisions.

Reverse Toxicokinetics (rTK): *in vitro* concentration to *in vivo* dose



Population Health



Three Cornerstones

- New paradigm for toxicity testing (TT21C), based on perturbation of toxicity pathways
- Advanced risk assessment methodologies, including those addressed in *Science and Decisions*
- **Population health approach:** multiple health determinants and multiple interventions



Population Health

Regulatory

Economic

Advisory

Community

Technological

Multiple Interventions

Health Risk Policy Analysis

Evidence Based Policy

Health Risk Science

Determinants and Interactions

Biology
and
Genetics

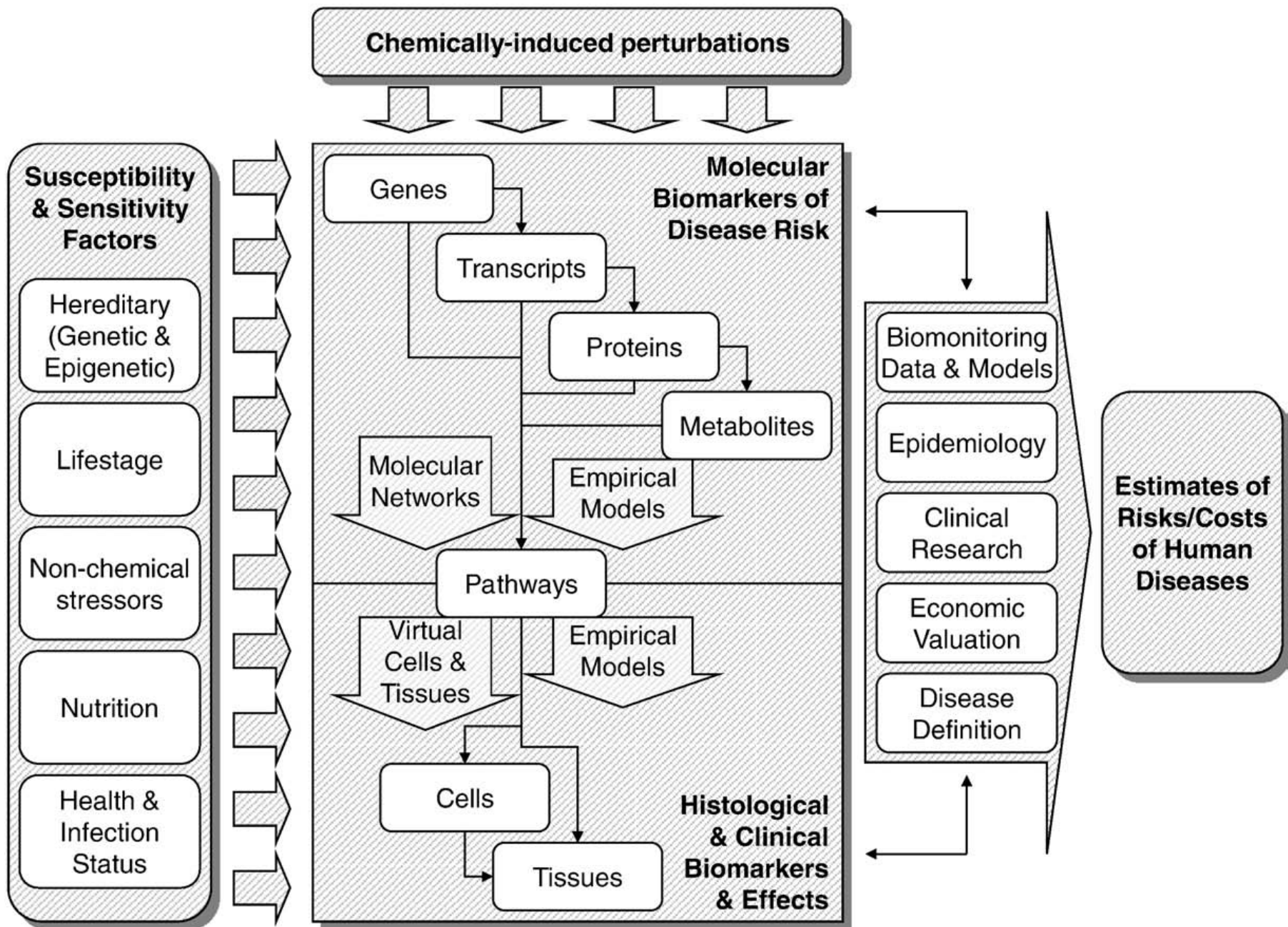
Biology-environment
interactions

Environment
and
Occupation

Environment-social
interactions

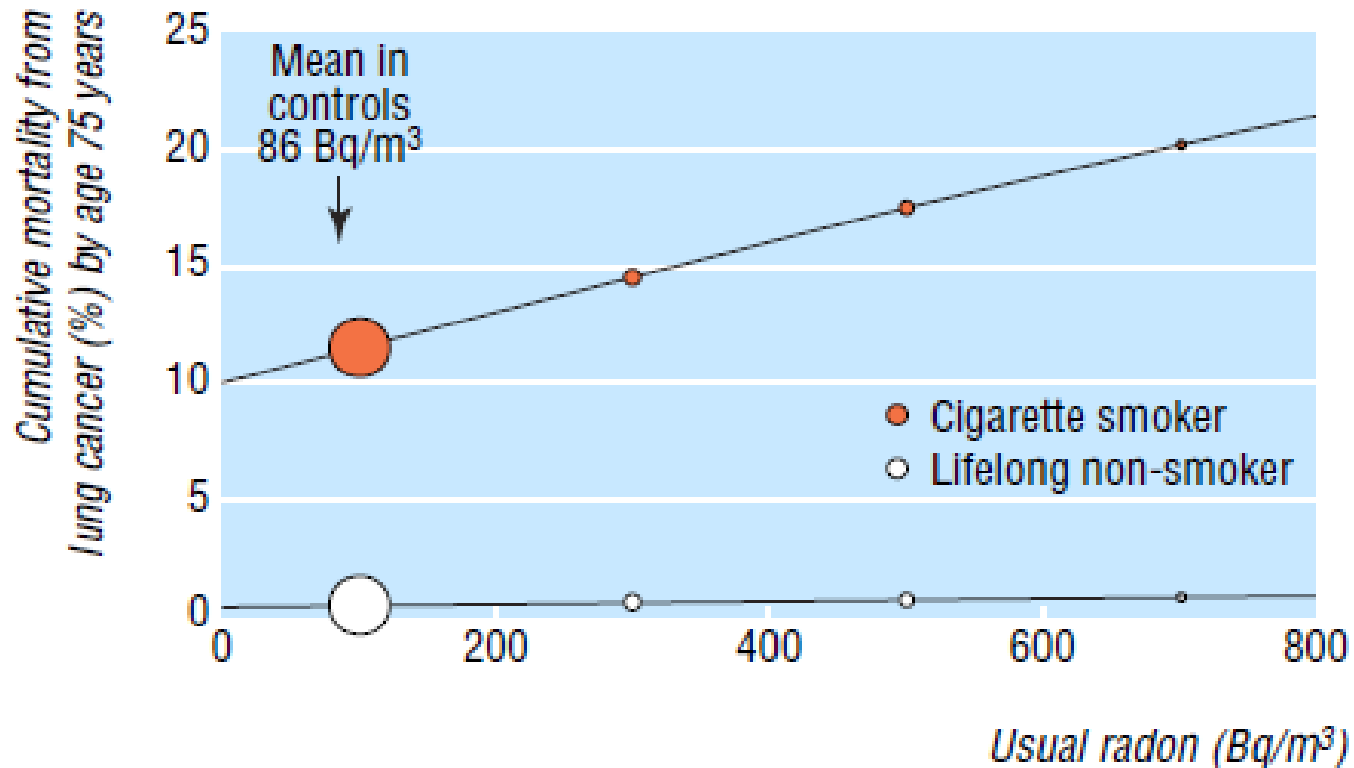
Social
and
Behavioural

Biology-social interactions



Chiu, W.A., et al., Approaches to advancing quantitative human health risk assessment of environmental chemicals in the post-genomic era, *Toxicol. Appl. Pharmacol.* (2010), doi:10.1016/j.taap.2010.03.019

Social-Environment Interaction



Darby et al. (2005), *Radon in homes and risk of lung cancer: collaborative analysis of individual data from 13 European case-control studies*. *BMJ* 330: 223-226

Social-Genetic Interaction

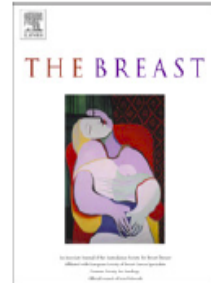
The Breast 19 (2010) 479–483



Contents lists available at ScienceDirect

The Breast

journal homepage: www.elsevier.com/brst



Original article

Alcohol consumption and the risk of breast cancer among *BRCA1* and *BRCA2* mutation carriers

Jessica Dennis^{a,b}, Parviz Ghadirian^{b,c}, Julian Little^{a,b}, Jan Lubinski^d, Jacek Gronwald^d, Charmaine Kim-Sing^e, William Foulkes^f, Pal Moller^g, Henry T. Lynch^h, Susan L. Neuhausenⁱ, Susan Domchek^j, Susan Armel^k, Claudine Isaacs^l, Nadine Tung^m, Kevin Sweetⁿ, Peter Ainsworth^o, Ping Sun^p, Daniel Krewski^{a,b}, Steven Narod^{p,*} the Hereditary Breast Cancer Clinical Study Group^q

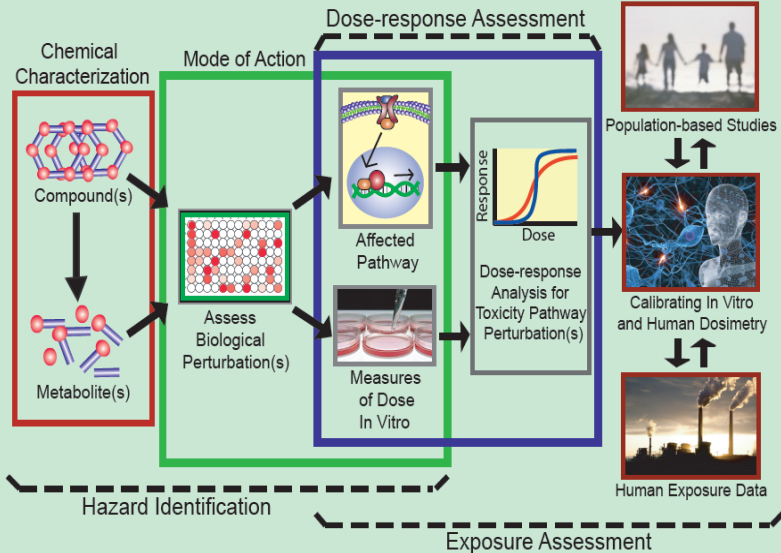
Population Health



Risk-based Decision Making



Characterization of Risk and Uncertainty



Health Determinants and Interactions



Problem Formulation and Scoping



Risk Management

Risk Assessment

Objectives

Risk Management



Transparency

Stakeholder Involvement

Communication

Risk Management Principles (1/2)

- Beneficence and non-maleficence (*do more good than harm*)
- Natural justice (*a fair process of decision making*)
- Equity (*ensure an equitable distribution of risk*)
- Utility (*seek optimal use of limited risk management resources*)
- Honesty (*be clear on what can and cannot be done to reduce risk*)

Risk Management Principles (2/2)

- Acceptability of risk (*do not impose risks that are unacceptable to society*)
- Precaution (*be cautious in the face of uncertainty*)
- Autonomy (*foster informed risk decision-making for all stakeholders*)
- Flexibility (*continually adapt to new knowledge and understanding*)
- Practicality (*the complete elimination of risk is not possible*)

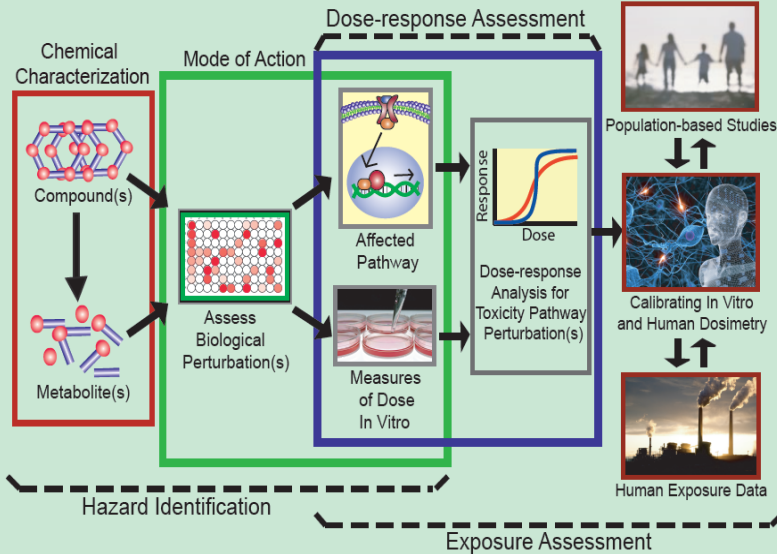
Population Health



Risk-based Decision Making



Characterization of Risk and Uncertainty



Health Determinants and Interactions



Problem Formulation and Scoping



Risk Management

Risk Assessment

Objectives

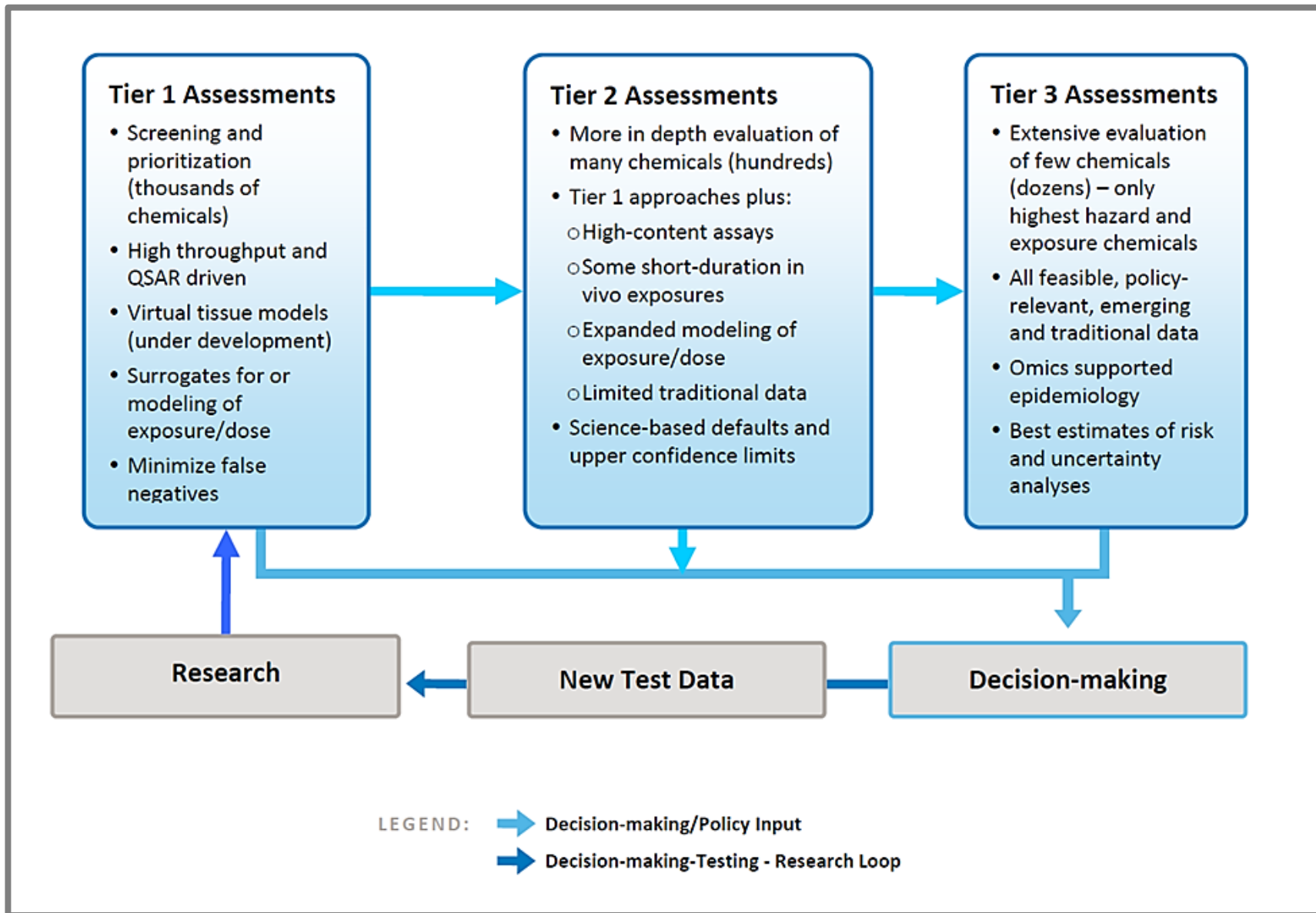
Transparency

Stakeholder Involvement

Communication

Case Study Prototypes





NexGen Tiered Approach to Risk Assessment

www.epa.gov/risk/nexgen/docs/NexGen-Program-Synopsis.pdf

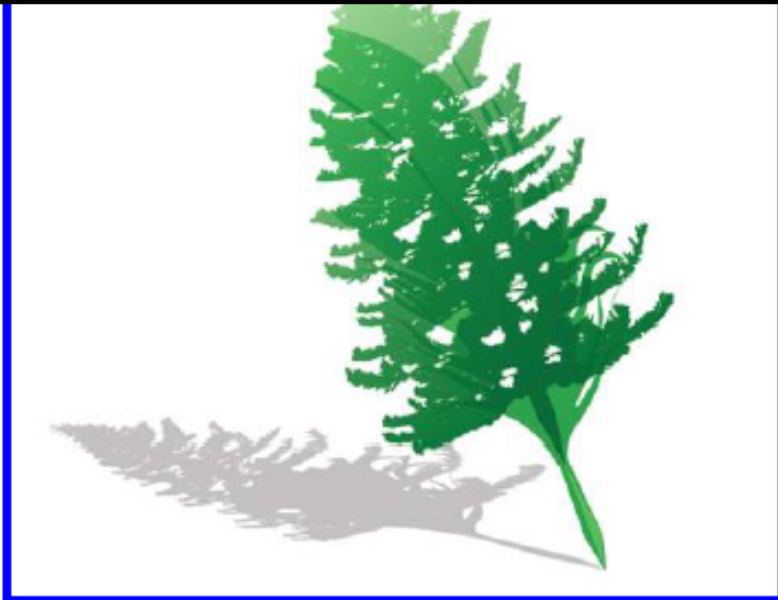
Designing Science in a Crisis: The Deepwater Horizon Oil Spill

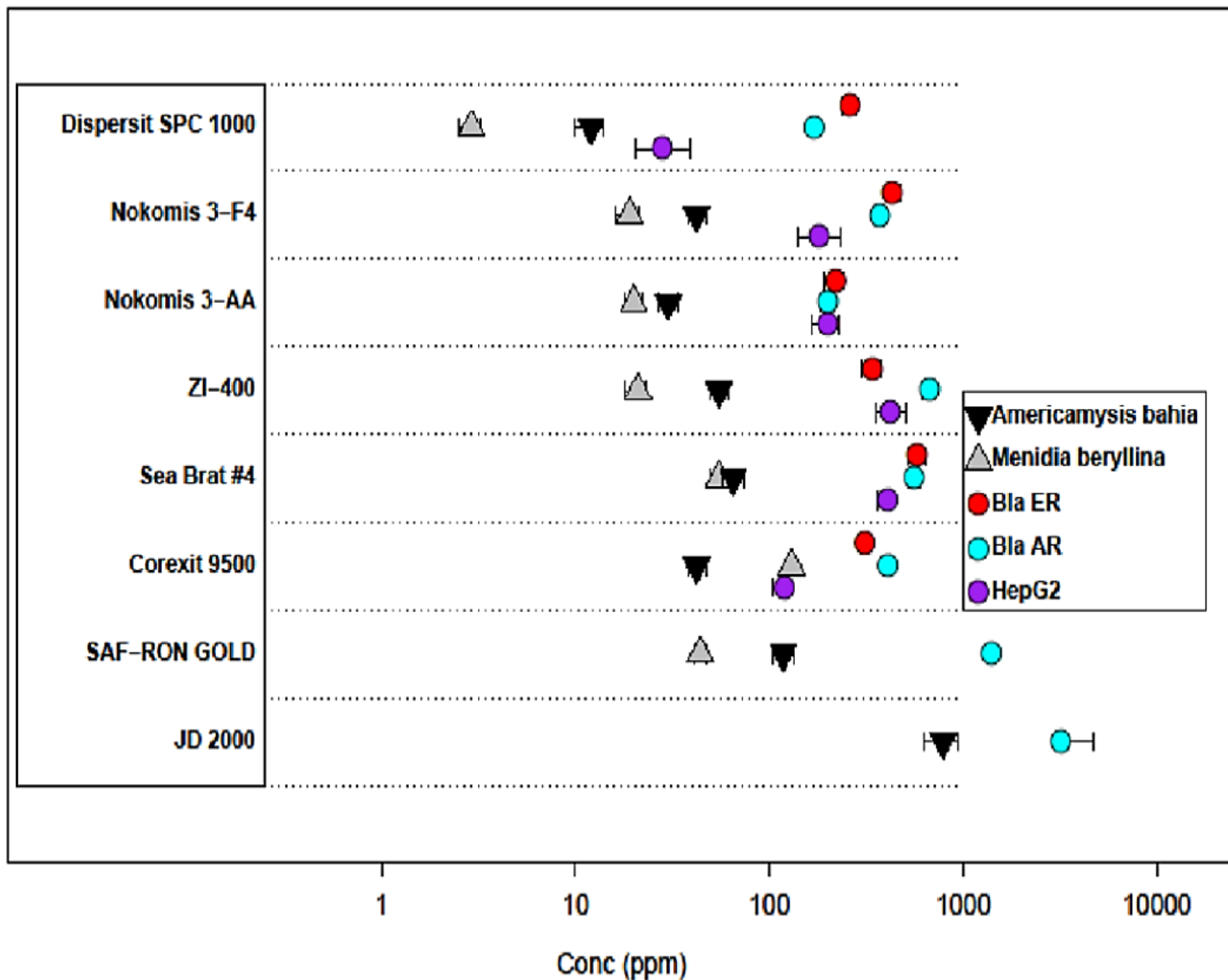
PAUL T. ANASTAS*
CYNTHIA SONICH-MULLIN*
BECKY FRIED

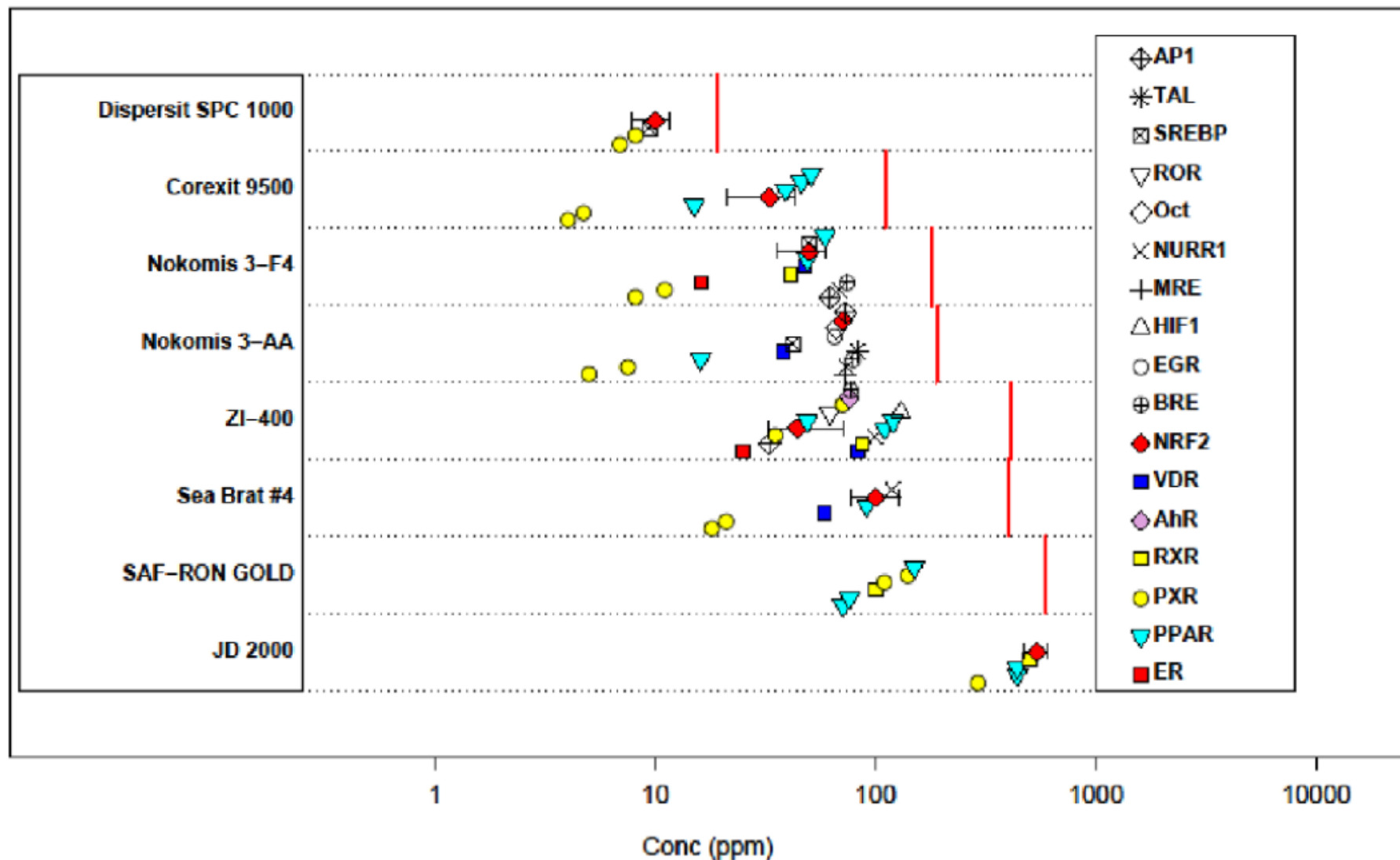
*Office of Research and Development, U.S. Environmental
Protection Agency, Washington, DC*



Tier 1: Screening and Ranking







Summary plot of results for all Attagene assays and the dispersants. Each horizontal band displays EC50 values for a single dispersant. Points are staggered in the y-direction to make overlapping points visible. Multiple assays for a given gene target (e.g. PPAR α , PPAR δ , PPAR γ) are represented by a single symbol, plotted repeatedly. 95% confidence intervals are shown on assays for the NRF2 as an example. The dispersant-specific vertical red lines indicate the LC50 for cytotoxicity in the Attagene assays (HepG2 cells).

Tier 2: Limited Scope Assessment

Mutation Research 746 (2012) 135–143



Contents lists available at SciVerse ScienceDirect

Mutation Research/Genetic Toxicology and Environmental Mutagenesis

journal homepage: www.elsevier.com/locate/gen tox
Community address: www.elsevier.com/locate/mutres

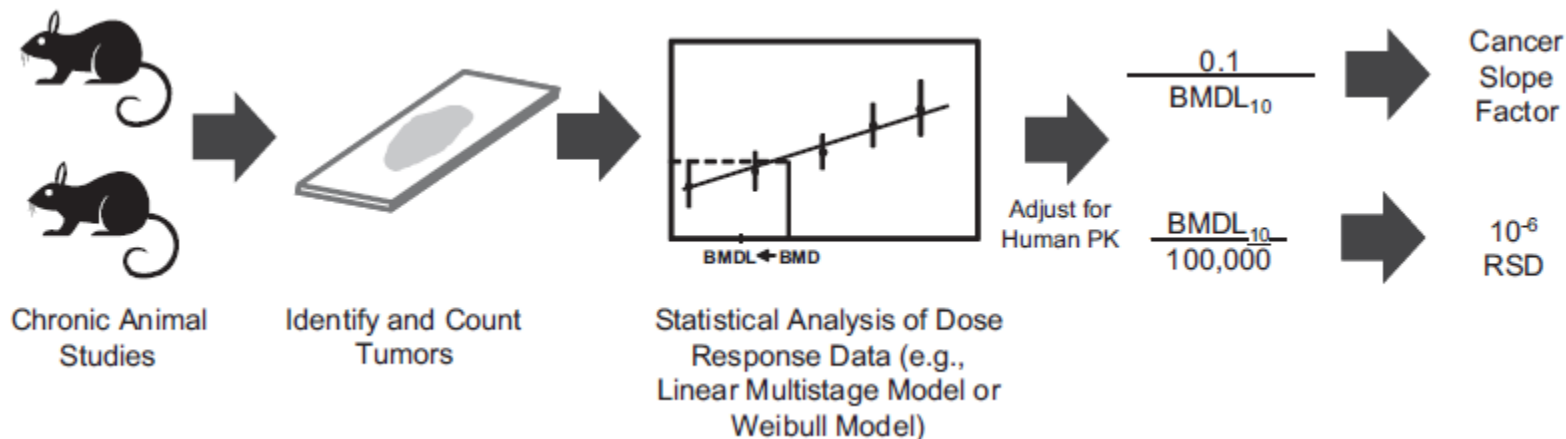


Integrating pathway-based transcriptomic data into quantitative chemical risk assessment: A five chemical case study

Russell S. Thomas^{a,*}, Harvey J. Clewell III^a, Bruce C. Allen^b, Longlong Yang^a, Eric Healy^a,
Melvin E. Andersen^a

^a The Hamner Institutes for Health Sciences, 6 Davis Drive, Research Triangle Park, NC 27709, United States

^b Bruce Allen Consulting, 101 Corbin Hill Circle, Chapel Hill, NC 27514, United States



Traditional versus Toxicogenomics Determination of BMD

Transcriptional benchmark dose estimates for the most sensitive pathway.

Chemical ^a	GeneGo pathway map	Total genes in category/genes with BMD	Median BMD (mg/kg-d or mg/m ³) ^b	Median BMDL (mg/kg-d or mg/m ³) ^b
DCBZ	Neolacto-series GSL metabolism p.2 (ID: 905)	17/6	90.7	61.2
PGBE	Beta-alanine metabolism (ID:2313)	10/5	630.0	368.9
TCPN	Galactose metabolism (ID: 821)	21/6	9.5	4.5
MECL (liver)	CFTR translational fidelity (class I mutations) (ID: 2939)	77/59	1460.5	945.9
MECL (lung)	Folic acid metabolism (ID: 879)	14/5	1074.0	659.8
NPTH	Acetaminophen metabolism (ID: 2377) ^c	14/9	7.5	5.4

^a DCBZ, 1,4-dichlorobenzene; PGBE, propylene glycol mono-t-butyl ether; TCPN, 1,2,3-trichloropropane; MECL, methylene chloride; NPTH, naphthalene.

^b Median transcriptional BMD and BMDL values for the associated GeneGo pathway map.

^c GeneGo pathway map for acetaminophen metabolism contains five genes associated with Ugt1a isoforms that map to the same probe sets which skews the median value. This is due to the mouse Ugt1 locus that produces nine different genes through the alternative splicing of 14 variable exons to four constant exons [62].

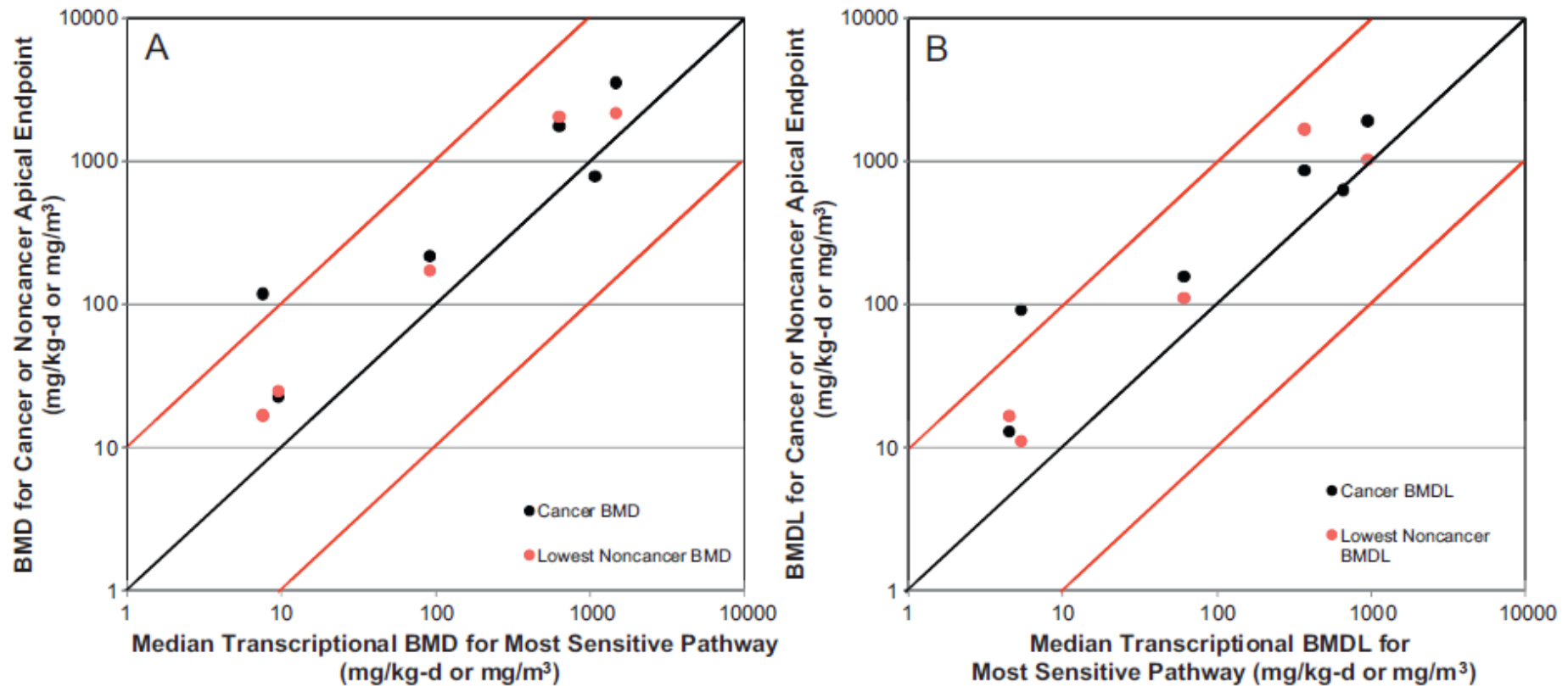


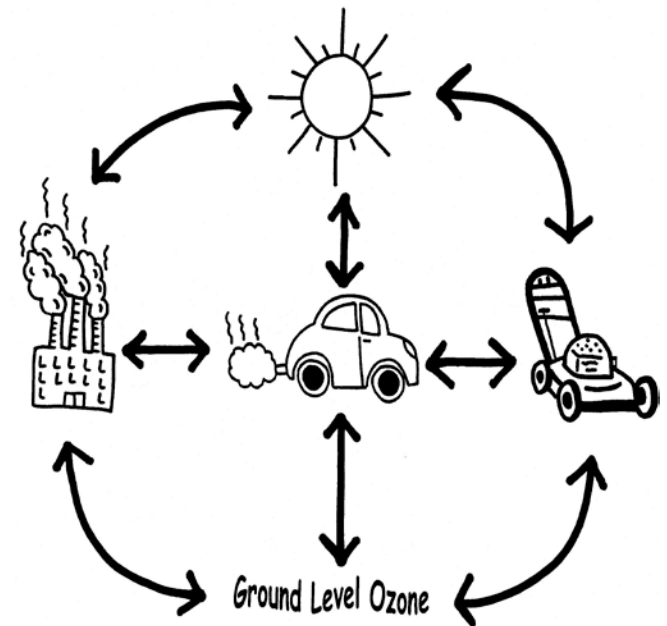
Fig. 5. Scatter plot of the relationship between (A) BMD and (B) BMDL values for the cancer and non-cancer apical endpoints and the transcriptional BMD and BMDL values for the most sensitive pathway. For each chemical and tissue, the BMD and BMDL values for tumor incidence and the lowest non-cancer BMD and BMDL values were plotted. For MECL in the lung, no non-cancer BMD or BMDL values were plotted due to the absence of histological changes. The red lines signify a 10-fold difference between the apical and transcriptional responses.

Thomas et al. (2012) found a strong correlation between transcriptional BMDs for specific pathways and traditional BMDs

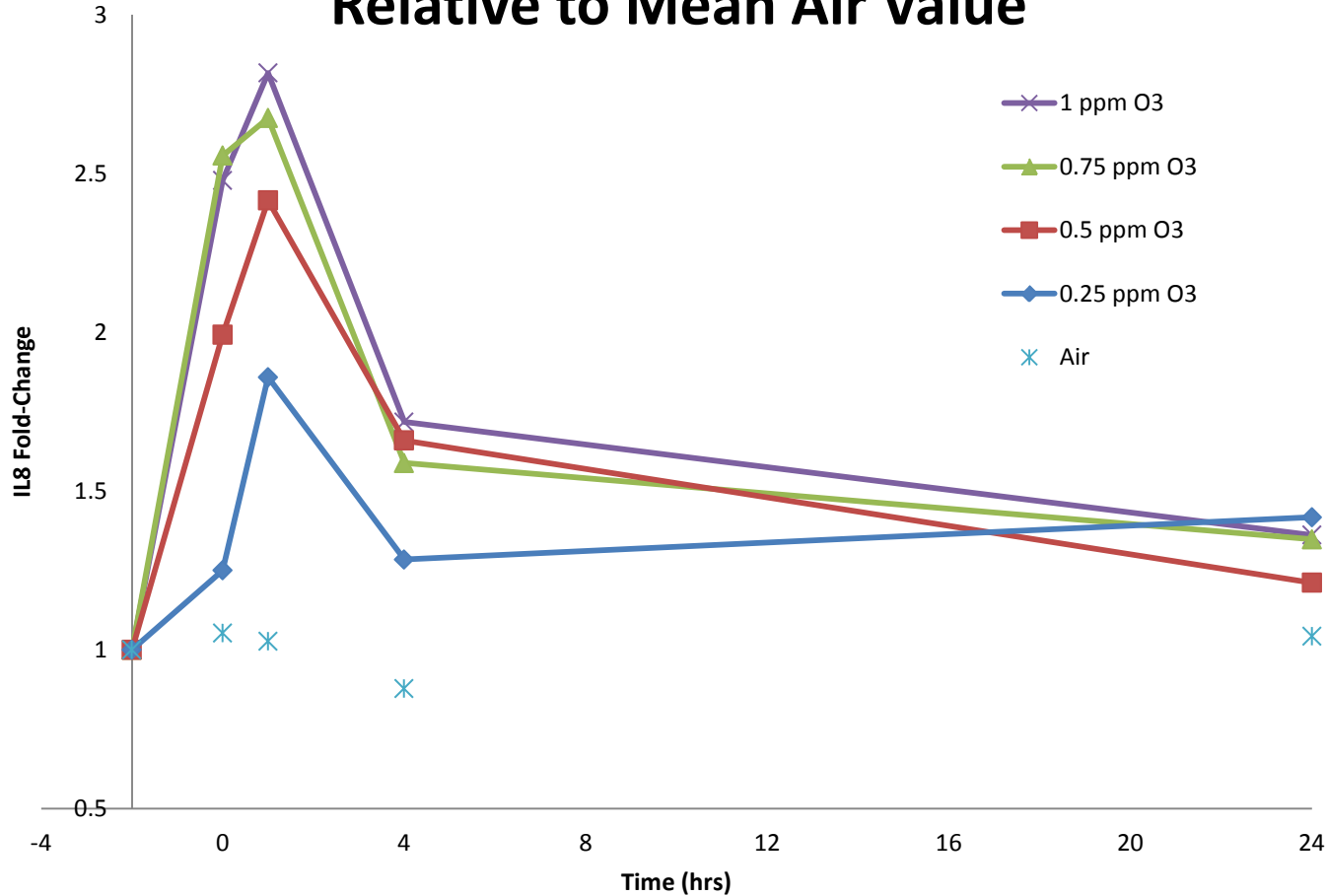
Tier 3: Major Assessment

Lung Injury and Ozone

- To identify toxicity pathways using 'omics' data
- To determine accuracy of predicting in vivo responses from in vitro toxicity pathway induction from toxicants
- To develop a biologically-based dose-response (BBDR) based on the integration of diverse data sets



IL8 RNA Expression Time Course Relative to Mean Air Value

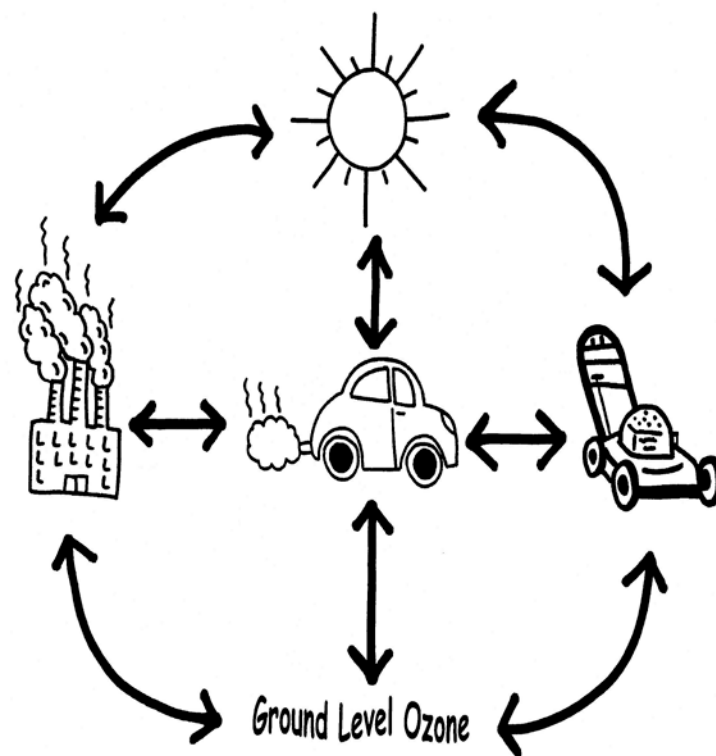


Response time course of IL8 RNA expression, relative to mean air value. Peak response occurs 3 hours post exposure cessation.

Lung Injury and Ozone

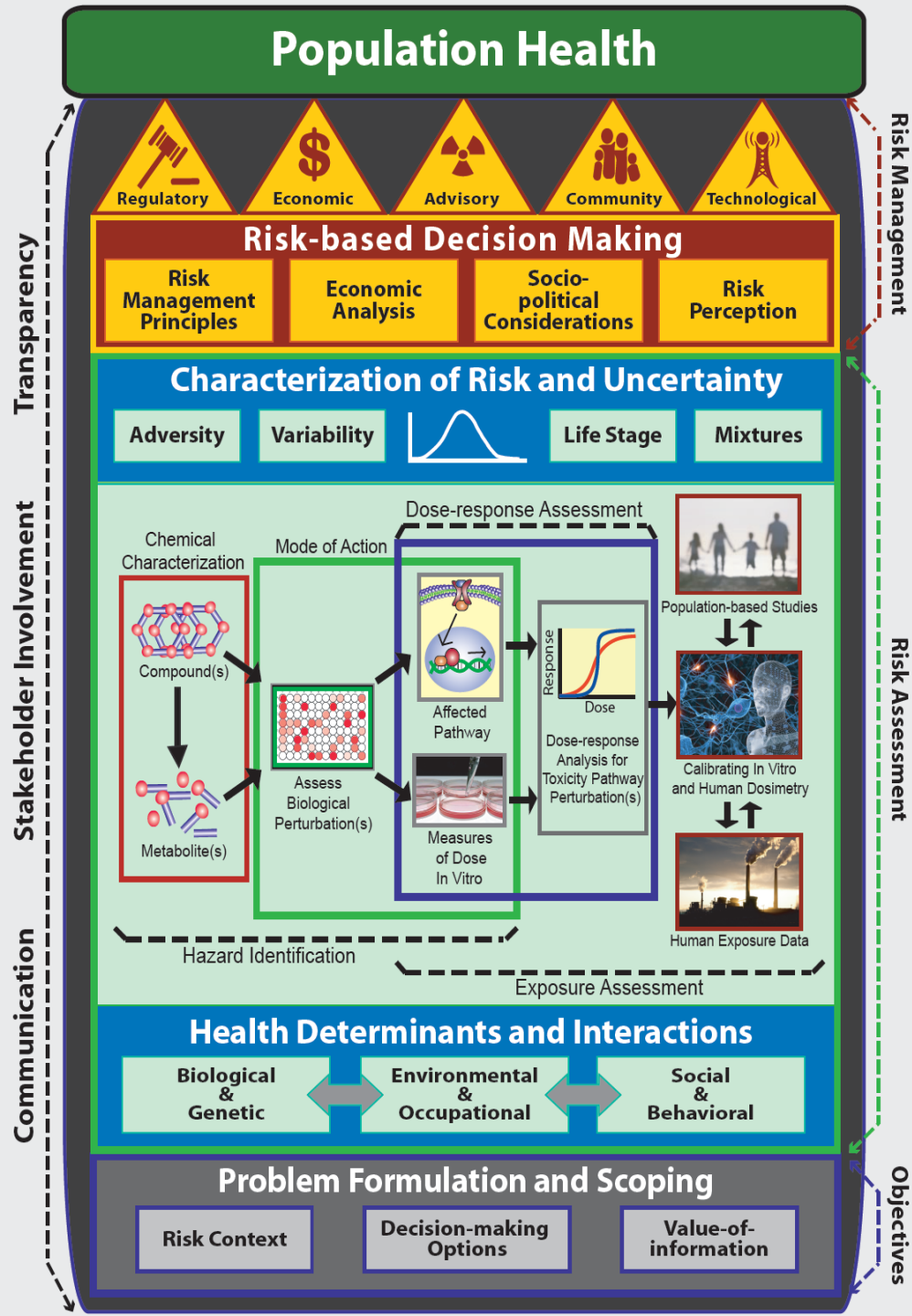
Conclusion

NF- κ B signaling is seen early during ozone exposure, and there is a clear dose-response with the cytokine IL-8.



<i>Scientific Tools</i>	<i>Tier 1: Ranking and Screening</i>		<i>Tier 2: Limited Scope Assessment</i>	<i>Tier 3: Major Assessment</i>	
	DWH Oil Spill Dispersants	Type-2 Diabetes	Short-term In Vivo Assay	Ozone and Lung Injury	Benzene and Cancer
Structure-activity relationships	✓		✓	✓	✓
MOA based in vitro toxicity pathway assays	✓	✓	✓	✓	✓
High throughput screening	✓		✓	✓	✓
Stem cell biology					✓
Functional genomics	✓	✓	✓	✓	✓
Bioinformatics	✓	✓	✓	✓	✓
Systems biology	✓	✓	✓	✓	✓
Computational systems biology	✓		✓	✓	✓
PBPK and dosimetry			✓	✓	✓
Toxicity-related biological pathway altering dose	✓		✓	✓	✓
Molecular and genetic epidemiology		✓		✓	✓
Biomarkers	✓	✓	✓	✓	✓

Population Health



Three Cornerstones

- **New paradigm for toxicity testing (TT21C)**, based on perturbation of toxicity pathways
- **Advanced risk assessment methodologies**, including those addressed in *Science and Decisions*
- **Population health approach**: multiple health determinants and multiple interventions

